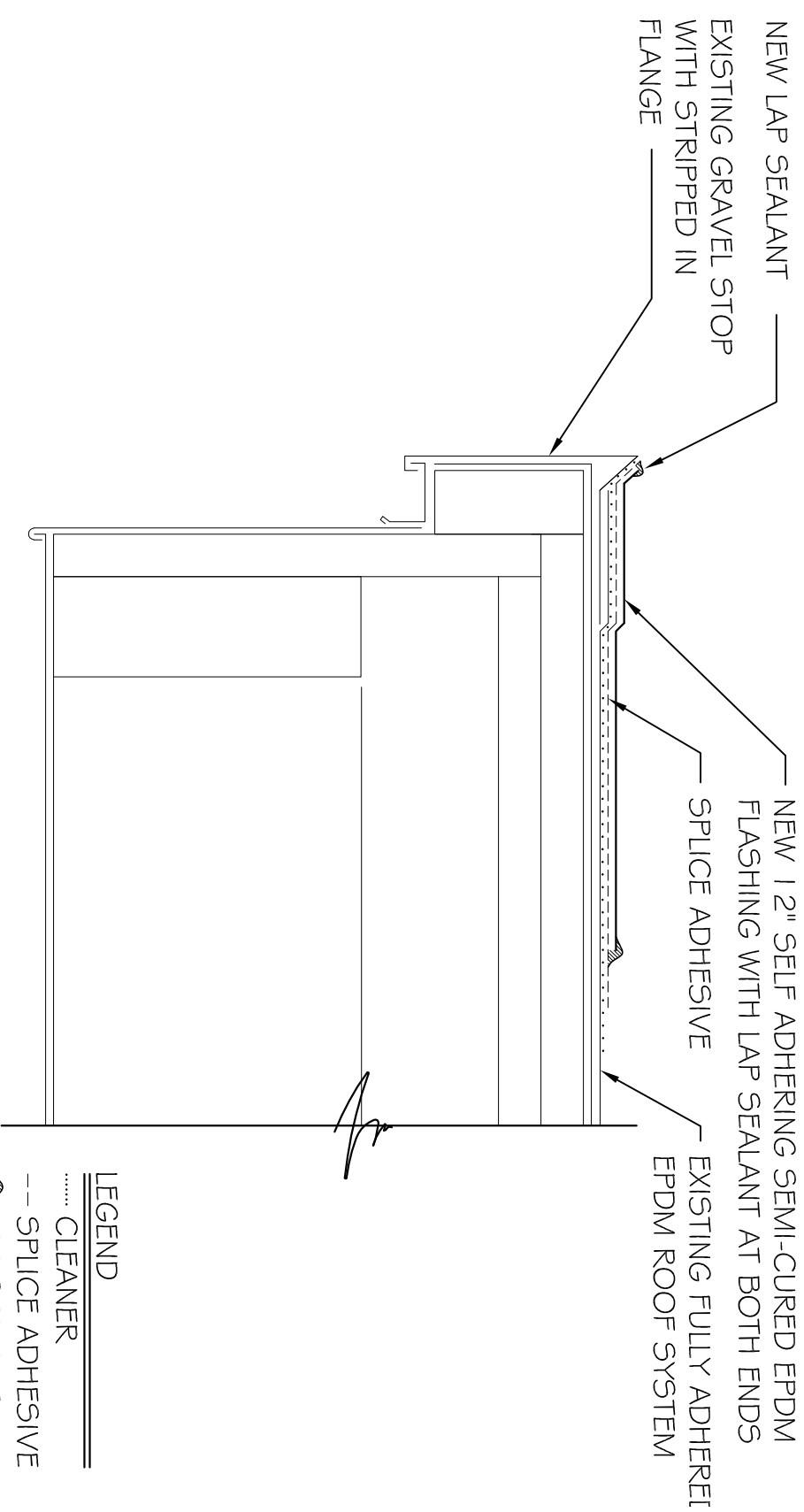


- NOTE:
1. SCRAP AND REMOVE ALL LOOSE SPM LAP SEALANT FROM ROOF EDGE
 2. PRIOR TO APPLICATION OF SPlice ADHESIVE, THE EXISTING LAP SEAM IS TO BE PREPARED WITH MANUFACTURERS RECOMMENDED CLEANING SOLUTION AND PROCEDURES. CONSULT MANUFACTURER FOR RECOMMENDED MEANS AND METHODS.
 3. READHERE ALL METAL TO EPDM DEBONDED CONDITIONS WITH SEAM TAPE
 4. CLEAN SURFACES TO RECEIVE NEW SPM LAP SEALANT WITH AGED MEMBRANE CLEANER
 5. APPLY SPlice ADHESIVE TO EPDM TO RECEIVE SPM LAP SEALANT
 6. APPLY SINGLE PLY LAP SEALANT TO ALL EDGES

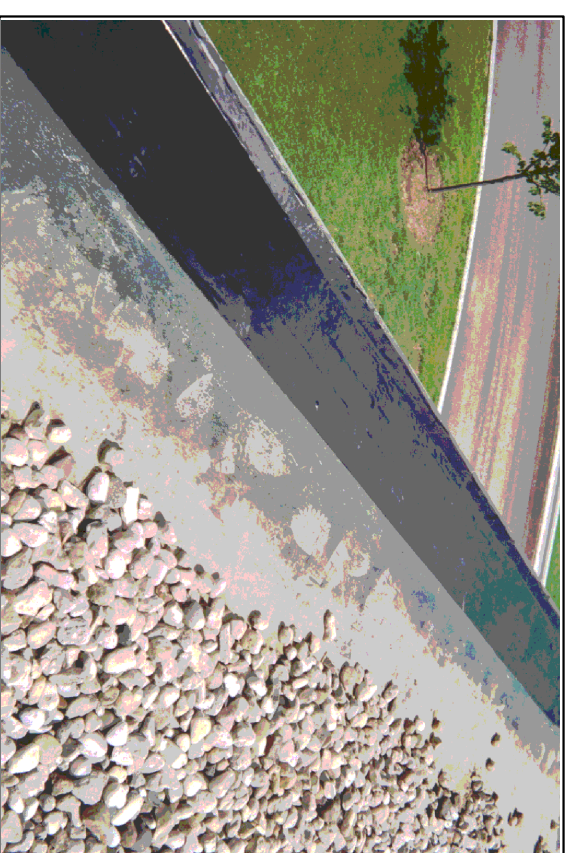


- LEGEND
- CLEANER
 - SPlice ADHESIVE
 - ▲ LAP SEALANT

1 GRAVEL STOP ROOF EDGE RENOVATION DETAIL

R 1 1 EPDM ROOFING ASSOCIATION

3" = 1'-0"



GRAVEL STOP ROOF AFTER RENOVATION

EPDM ROOFING ASSOCIATION

10-07-2004