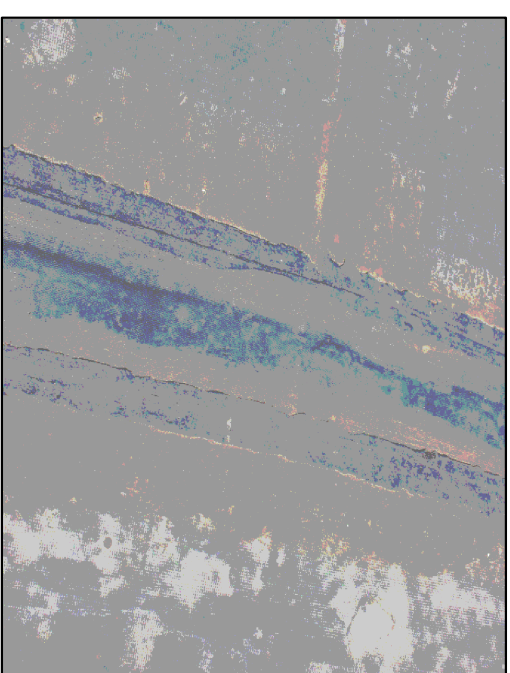
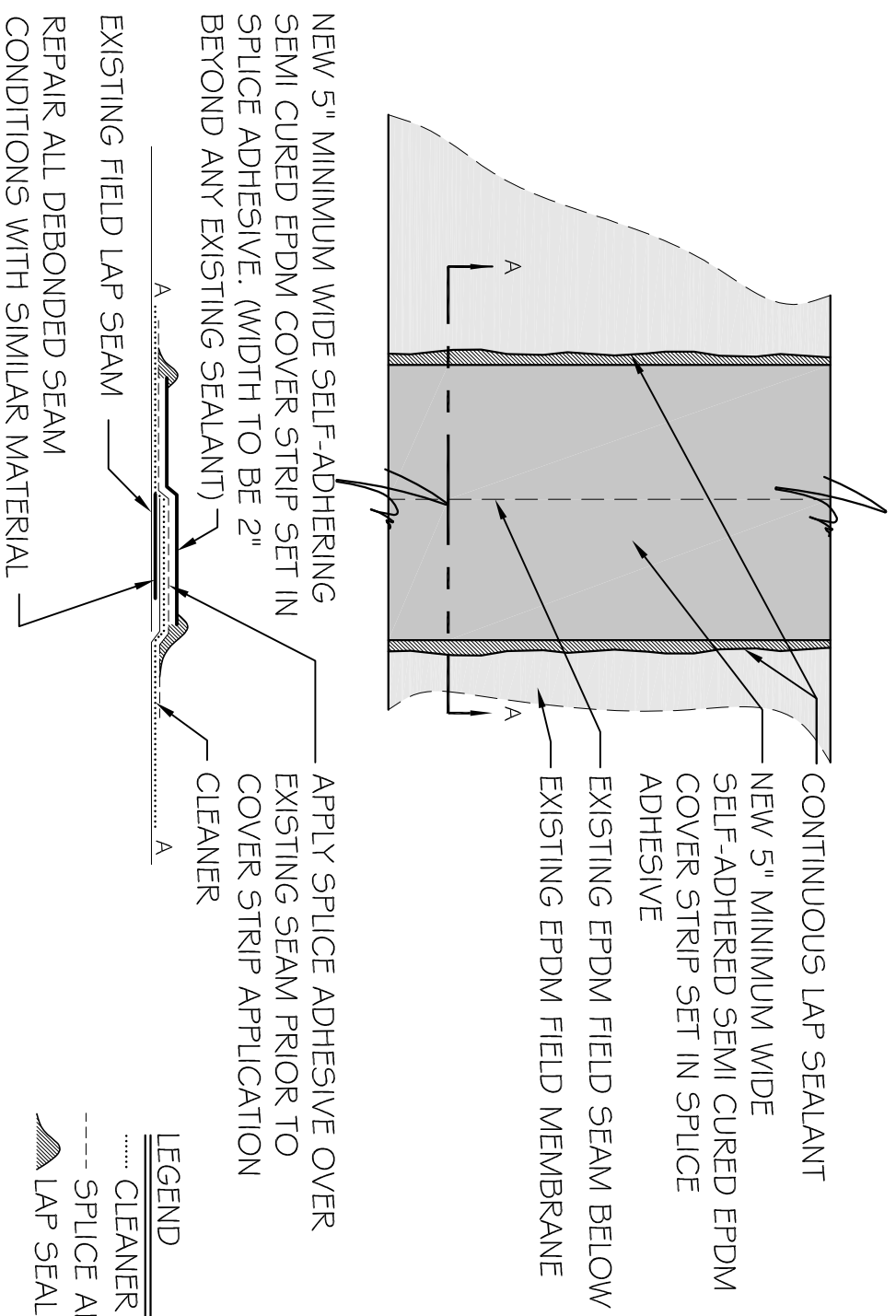
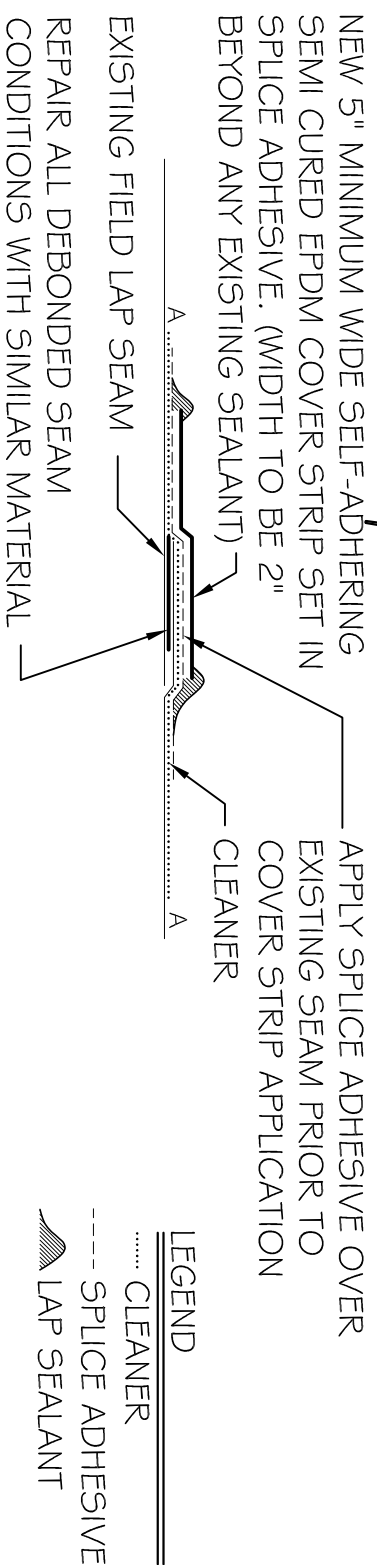


- NOTES: 1. PRIOR TO APPLICATION OF SPLICE ADHESIVE, THE EXISTING LAP SEAM IS TO BE PREPARED WITH MANUFACTURER'S RECOMMENDED CLEANING SOLUTION AND PROCEDURES. CONSULT MANUFACTURER FOR RECOMMENDED MEANS AND METHODS.
2. INSPECT THE EXISTING FIELD LAP SEAM FOR BONDING DEFICIENCIES. CLEAN AND REPAIR PRIOR TO COVER STRIP APPLICATION.
3. FOR LONGITUDINAL COVER STRIP LAPS SEE DETAIL I/R2
4. FOR TEE JOINTS AND CROSS SEAMS SEE DETAIL I/R3
5. FOR SIMILAR CONDITIONS THE EPDM MEMBRANES MAY BE EXISTING AND OR NEW



FIELD SEAM AFTER RESTORATION



1 EXISTING EPDM FIELD SEAM RESTORATION DETAIL

EPDM ROOFING ASSOCIATION

3" = 1'-0"